



# ELEVATING PROJECT CANCER SUPPORT

PHASE TWO Addressing the unique  
non-medical needs of those living with cancer

**Help us renovate Bannon House**





ABOVE

Current photo of Bannon House



# Addressing the unique needs of people living with cancer...with your help

## **No cost, no referral. Support programs for non-medical care.**

We look forward to providing a caring community, in person and online, so anyone living with cancer, their caregiver, and family members can access vital information, meaningful support, and effective coping strategies **at no cost, with no referral.**

If you or a loved one is living with cancer, you will soon have access to free cancer support programs to help overcome the emotional, physical, and practical challenges you may be experiencing.

## **Let's start with the background**

In our last campaign, we introduced the first stage of Project Cancer Support.

Our community embraced this initiative, and we quickly reached our \$1.1 Million goal to get the program off the ground.

*A lot has happened since then* including acquiring a home near The Moncton Hospital, **Bannon House**, which will provide a unique space for patients to gather and attend programs while fostering wellness.

**To prepare the home for this phase of Project Cancer Support, we need your help raising \$1 Million to transform and optimize the space to offer a safe and warm environment for those participating in our programs.**

Your donation can help us bring our project to the next level.

*Together, we can help people live better with cancer.*



# A hope-inspiring space to foster wellness where we will treat you like family

We are deeply grateful to a generous donor who gifted the Friends Foundation a home near The Moncton Hospital, at 166 MacBeath Avenue, which we are naming **Bannon House** in their honour. Once renovated, this accessible, hope-inspiring home will house several warm, cozy, and private spaces to accommodate the many activities offered for cancer patients and their families every day.

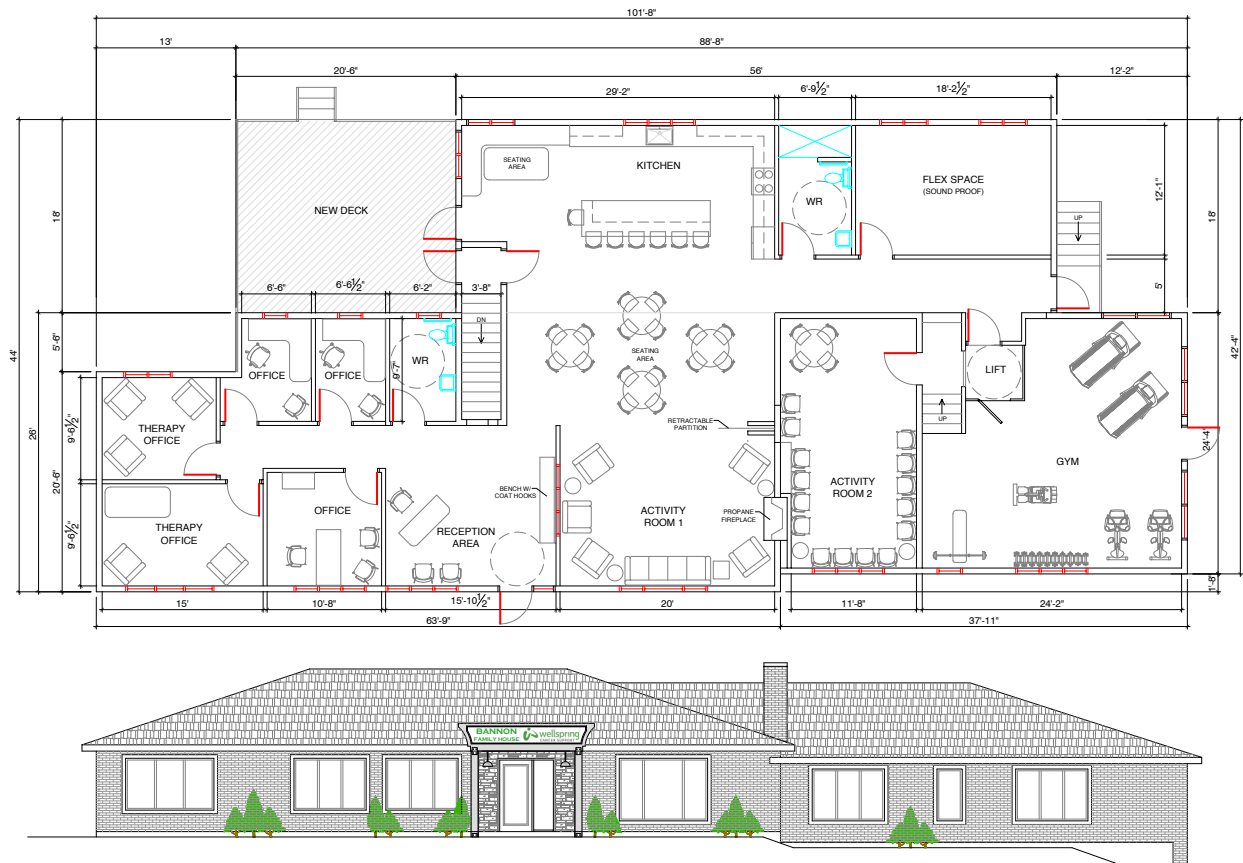
**Bannon House** will provide a safe and positive environment where people living with cancer can experience connection, forge relationships, and acquire vital information and skills for coping with the disease.

We are delighted that the City of Moncton has already approved rezoning of the home. Building permits to refurbish the home have been issued, and we are hoping to open in spring 2025.

The home needs major commercial-grade renovations including upgrades to plumbing, electrical, HVAC, roof, windows, doors, patio, landscaping, and paving, along with significant interior and exterior reconfigurations. Over 1,000 square feet will be added, bringing the total square footage to 3,567.

In addition to the renovations, the funds will also be used to

- completely refurbish the home with comfortable furniture
- fully equip a teaching kitchen with modern, safe appliances
- fully equip a gym
- provide therapy offices, meeting area, and office space for staff and volunteers
- provide a resource room with computer access



Renderings detailing the transformation of the home to accommodate our cancer support programs.

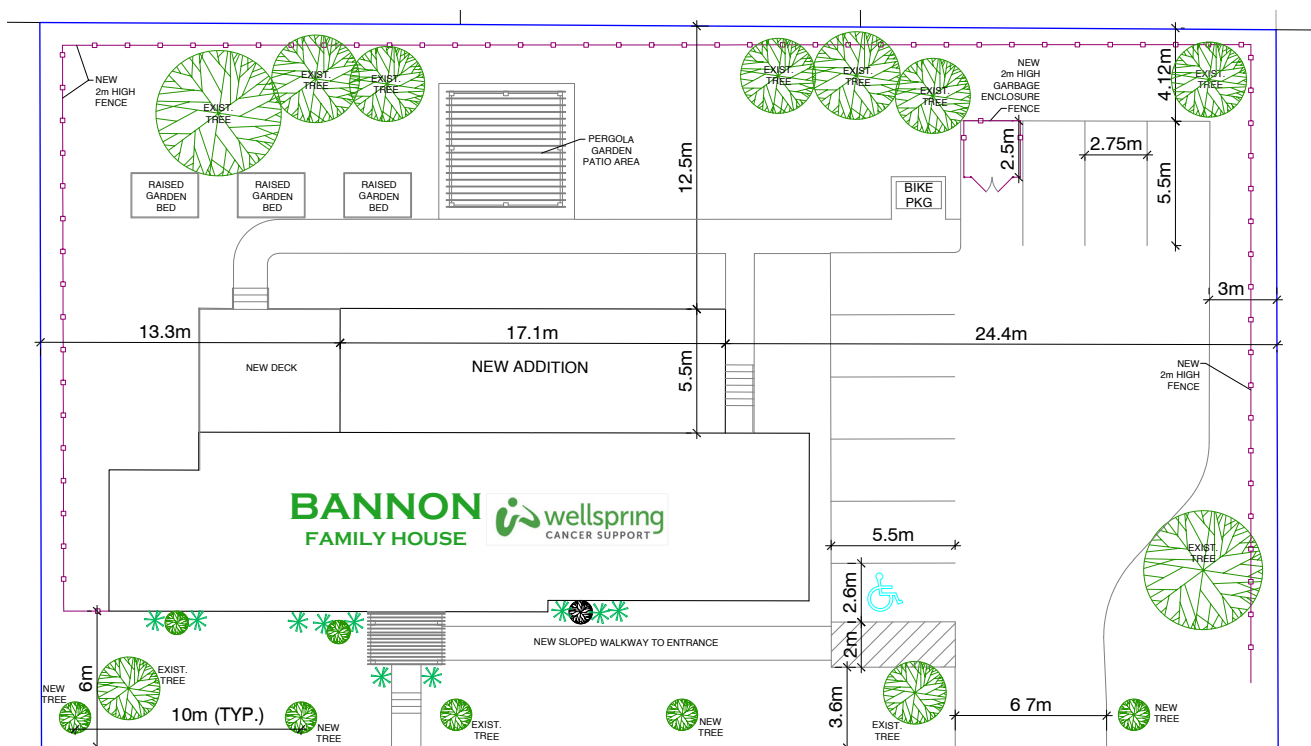
- purchase a defibrillator, to be placed in a central location within the home
- provide a modern security system to optimize safety
- create eight parking spaces, including accessible parking
- maximize storage space in the basement area
- improve landscaping to include backyard haven and garden space



Current photos of Bannon House at 166 MacBeath Avenue, within steps of The Moncton Hospital.



The home's exterior will be converted into a backyard haven and garden space, offering people with cancer a therapeutic space to relax and heal.



# The need is growing

## Every week, 95 New Brunswickers learn that they have cancer.

In 2022, NB had approximately 5,000 cancer cases diagnosed. Today, that number is at least 12,000 and growing. Every hour, 26 Canadians are being diagnosed, and two in five Canadians will hear these words in their lifetime.

As our province ages, we can expect cancer rates to increase. Thankfully, due to advances in diagnosis and treatment, more people are living

longer with cancer. But for two-thirds, the effects of cancer and its treatments can be life limiting for years post-diagnosis.

**We're fortunate to have world-class medical resources to treat cancer in our province, but people living with cancer need so much more.** Cancer patients and their families often have difficulty finding the emotional, social, and practical support they so urgently require.

## Our Wellspring New Brunswick Delivery Partners

Friends Foundation is now an affiliate with Wellspring, Canada's leader in evidence-based Cancer Support Programs. By uniting our organizations to form Wellspring New Brunswick, we will amplify our mission to provide vital services to those living with cancer in Southeast New Brunswick and beyond. We will cover the entire province through online courses, and in-person supports will expand through Vitalité. Working together with the CHU Dumont Foundation, we also look forward to partnering with other organizations in our community, such as the YMCA, to implement the Cancer Support Project. The program will be 100% funded through the Foundations.



Wellspring has established, developed, and continues to advance a supportive care program designed to meet the mental health, rehabilitative, emotional, and educational needs of people who have cancer, and the related needs of their family members and close caregivers.

## Volunteers are at the heart of Wellspring New Brunswick

Volunteers will provide important support at every level of the organization. Whether they have experienced their own cancer journey, have been a caregiver for someone with cancer, or are someone who has skills to share, Wellspring New Brunswick welcomes and values volunteer contributions.

“Along with our partners, Wellspring New Brunswick will be devoted exclusively to the unique non-medical needs of all people in Southeast New Brunswick living with any type of cancer. We will start with a few programs and then expand. Over time, we will provide access to up to 50 evidence-based programs and services to serve the needs of cancer patients, their caregivers, and families.”



Jacqueline Bloom  
Manager, Cancer Support

## Teresa's Story

Project Cancer Support is a manifestation of my wants and wishes from the last five years of my breast cancer journey come true. Having access to credible, evidence-based programs such as Wellspring is an invaluable gift to both cancer patients and their caregivers. Until you go through a journey as I have, a person has no idea how important the non-medical support is and how big of a difference it can make. Wellspring will help me in so many ways by empowering me with education, skills, accepting myself for where I'm at, and feeling less alone. Focusing on survivorship is a game changer! I am beyond excited to have the opportunity to be able to give back and look forward to help others on their cancer journey by volunteering with the Wellspring program. I am all in!



Teresa Quimby, 59, who had a double mastectomy, with her mother, Mary Vautour, 81, who is also navigating cancer.

## Your gift will impact non-medical cancer care now

Our services will be administered cost-effectively, which includes using oncology experts supported by well-trained volunteers.

### Programs may include:

- Mindfulness and relaxation
- Exercise and movement
- Symptom management
- Brain fog
- Therapeutic arts
- Finance and workplace strategies
- One-on-one group counselling

### Our programs will also:

- Reduce the isolation often experienced by those living with cancer through a warm and welcoming supportive community.
- Provide a comprehensive range of evidence-based programs, services, and other resources that address the non-medical, but vitally important other needs of cancer patients, their caregivers and families, and the community.

- Ease debilitating physical symptoms like pain and fatigue.
- Reduce emotional distress for patients, their children, and their families.
- Lower the chances that cancer will return.
- Improve health outcomes in many cases.
- Improve access to income replacement programs.
- Provide clarity, support, and strategies related to finances, employment, and returning to work when they are ready.

The emotional distress of a cancer patient with unmet emotional needs can escalate to significant levels where it can compromise adherence to therapy, increase use of other health care services, and elevate costs for care.

Research shows cancer patients who participate in these types of programs experience improved mental health resulting in higher quality of life and health outcomes, and lower health care costs.

A full-time manager will be on site at **Bannon House** to facilitate the programs. Programs will be determined by the Program Advisory Committee made up of oncologists, nurses, Foundation staff from both Horizon and Vitalité Health Networks, and people with lived

experience. Initial programs—Peer Support, Exercise & Movement, Cancer Fatigue, Relaxation & Meditation, and Nourish—will be up and running in early 2025, some being delivered and housed at the YMCA.

## The medical community treats the patient. Our support programs treat the person.

Together, we can change lives for those living with cancer in our community. No one should face this disease alone.

Your donation towards our \$1 Million goal will bring **Project Cancer Support** to the next level with the **transformation of a home so that we can offer a safe and warm environment for those participating in our programs.**



## YOU CAN CHANGE LIVES

### Help us renovate **Bannon House**

Your generosity will open doors and improve the lives of those living with cancer.



Call 506-857-5488



Visit [FriendsFoundation.ca/Donate](https://FriendsFoundation.ca/Donate)



Come in to 135 MacBeath Avenue, Moncton, NB E1C 6Z8



 **FRIENDS**  
Foundation